

DEAL POST TEST 2019-20 - SCHOOL REPORT CARD

MAHE
CEO

34030100104 GLPS, MAHE

All Grades represent the following scorings in % *

GRADE A - >75	* School Status Grade represents the total enrollment of the school (Not %)
GRADE B - 51 TO 75	
GRADE C - 26 TO 50	
GRADE D - 10 TO 25	
GRADE E - <10	

Note: The Values given in the brackets denote the difference between the Pre and Post Test Scores.
(For Example: If the Pre-Test Grade is 'C' and the Post-Test Grade is 'A', then the progress is +2)

SCHOOL GRADE - AA

Status Gr. A (0)	Performance Gr. A(+1)
------------------	-----------------------

OVERALL PERFORMANCE GRADES

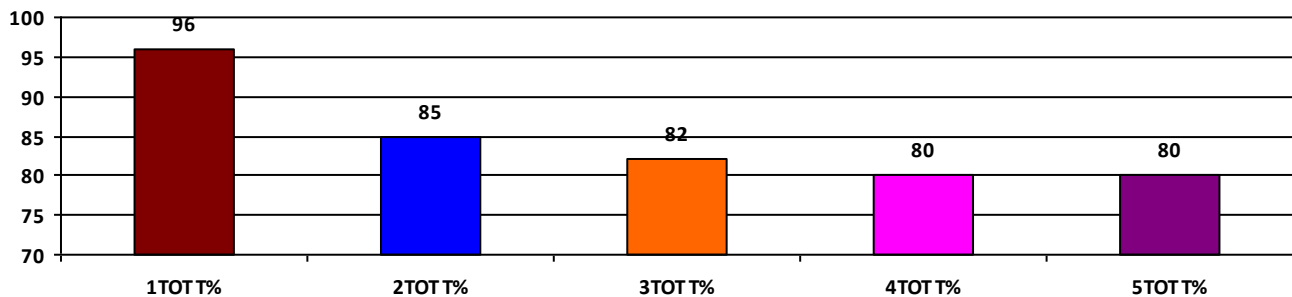
	Boys	Girls	Total
SCHOOL GR.	A	A	A
Diff. to Pre-Test	(+1)	(0)	(+1)
DIST. GR.	A	A	A
STATE GR.	B	B	B

CLASSWISE APPEARED

DETAILS	I STD	II STD	III STD	IV STD	V STD
BOYS	10	22	28	25	39
GIRLS	19	20	23	31	23
TOTAL	29	42	51	56	62
Diff. to Pre-Test	(-3)	(+3)	(+6)	(+11)	(+17)

CLASSWISE PERFORMANCE GRADES (% of marks)

DETAILS	I STD	II STD	III STD	IV STD	V STD
%	96	85	82	80	80
SCHOOL GR.	A	A	A	A	A
Diff. to Pre-Test	(0)	(0)	(+1)	(+1)	(+1)
DIST. GR.	A	A	A	A	A
STATE GR.	A	B	B	B	B



GRADEWISE PERFORMANCE (NO. OF STUDENTS)

ENGLISH	1 Std	2 Std	3 Std	4 Std	5 Std	TAMIL	1 Std	2 Std	3 Std	4 Std	5 Std
GR. A	29	35	40	48	52	GR. A	28	29	34	43	34
GR. B	0	5	10	4	8	GR. B	1	7	16	11	21
GR. C	0	2	1	2	2	GR. C	0	5	0	1	7
GR. D	0	0	0	2	0	GR. D	0	1	1	1	0
GR. E	0	0	0	0	0	GR. E	0	0	0	0	0

DEAL POST TEST 2019-20 - SCHOOL REPORT CARD

MAHE
CEO

34030100114 GOVT. LP SCHOOL-PARAKKAL

All Grades represent the following scorings in % *

GRADE A - >75	* School Status Grade represents the total enrollment of the school (Not %)
GRADE B - 51 TO 75	
GRADE C - 26 TO 50	
GRADE D - 10 TO 25	
GRADE E - <10	

Note: The Values given in the brackets denote the difference between the Pre and Post Test Scores.
(For Example: If the Pre-Test Grade is 'C' and the Post-Test Grade is 'A', then the progress is +2)

SCHOOL GRADE - AA

Status Gr. A (0) Performance Gr. A(+1)

OVERALL PERFORMANCE GRADES

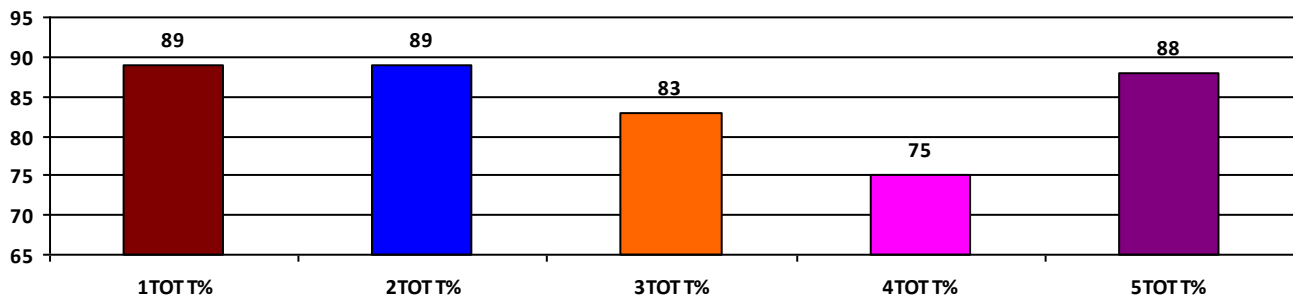
	Boys	Girls	Total
SCHOOL GR.	A	A	A
Diff. to Pre-Test	(+1)	(0)	(+1)
DIST. GR.	A	A	A
STATE GR.	B	B	B

CLASSWISE APPEARED

DETAILS	I STD	II STD	III STD	IV STD	V STD
BOYS	23	13	14	16	13
GIRLS	13	20	14	22	22
TOTAL	36	33	28	38	35
Diff. to Pre-Test	(+3)	(-1)	(+1)	(-1)	(-1)

CLASSWISE PERFORMANCE GRADES (% of marks)

DETAILS	I STD	II STD	III STD	IV STD	V STD
%	89	89	83	75	88
SCHOOL GR.	A	A	A	B	A
Diff. to Pre-Test	(0)	(0)	(+1)	(0)	(+1)
DIST. GR.	A	A	A	A	A
STATE GR.	A	B	B	B	B



GRADEWISE PERFORMANCE (NO. OF STUDENTS)

ENGLISH	1 Std	2 Std	3 Std	4 Std	5 Std	TAMIL	1 Std	2 Std	3 Std	4 Std	5 Std
GR. A	31	30	22	25	33	GR. A	32	30	17	24	34
GR. B	3	3	6	10	2	GR. B	2	3	11	11	1
GR. C	0	0	0	2	0	GR. C	1	0	0	2	0
GR. D	1	0	0	0	0	GR. D	1	0	0	0	0
GR. E	1	0	0	1	0	GR. E	0	0	0	1	0

DEAL POST TEST 2019-20 - SCHOOL REPORT CARD

MAHE
CEO

34030100216 GOVT LP SCHOOL-MOOLAKKADAVU

All Grades represent the following scorings in % *

GRADE A - >75	* School Status Grade represents the total enrollment of the school (Not %)
GRADE B - 51 TO 75	
GRADE C - 26 TO 50	
GRADE D - 10 TO 25	
GRADE E - <10	

Note: The Values given in the brackets denote the difference between the Pre and Post Test Scores.
(For Example: If the Pre-Test Grade is 'C' and the Post-Test Grade is 'A', then the progress is +2)

SCHOOL GRADE - AA

Status Gr. A (0)	Performance Gr. A(+1)
------------------	-----------------------

OVERALL PERFORMANCE GRADES

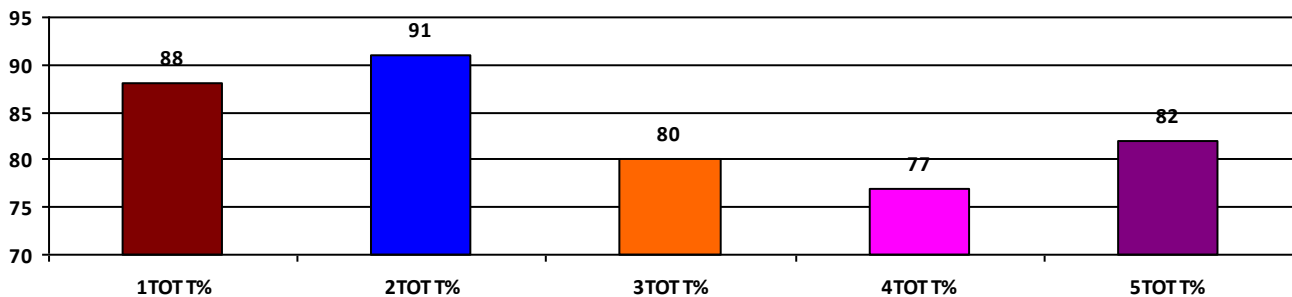
	Boys	Girls	Total
SCHOOL GR.	A	A	A
Diff. to Pre-Test	(+1)	(0)	(+1)
DIST. GR.	A	A	A
STATE GR.	B	B	B

CLASSWISE APPEARED

DETAILS	I STD	II STD	III STD	IV STD	V STD
BOYS	12	13	18	20	16
GIRLS	14	15	14	5	14
TOTAL	26	28	32	25	30
Diff. to Pre-Test	(+3)	(+1)	(-1)	(0)	(+1)

CLASSWISE PERFORMANCE GRADES (% of marks)

DETAILS	I STD	II STD	III STD	IV STD	V STD
%	88	91	80	77	82
SCHOOL GR.	A	A	A	A	A
Diff. to Pre-Test	(0)	(0)	(+1)	(+1)	(+1)
DIST. GR.	A	A	A	A	A
STATE GR.	A	B	B	B	B



GRADEWISE PERFORMANCE (NO. OF STUDENTS)

ENGLISH	1 Std	2 Std	3 Std	4 Std	5 Std	TAMIL	1 Std	2 Std	3 Std	4 Std	5 Std
GR. A	26	28	26	21	27	GR. A	23	23	20	18	21
GR. B	0	0	2	0	3	GR. B	3	5	7	4	9
GR. C	0	0	2	3	0	GR. C	0	0	4	2	0
GR. D	0	0	2	1	0	GR. D	0	0	1	1	0
GR. E	0	0	0	0	0	GR. E	0	0	0	0	0

DEAL POST TEST 2019-20 - SCHOOL REPORT CARD

MAHE
CEO

34030100413 GOVT LP SCHOOL - PALLOOR NORTH

All Grades represent the following scorings in % *

GRADE A - >75	
GRADE B - 51 TO 75	* School Status Grade
GRADE C - 26 TO 50	represents the total
GRADE D - 10 TO 25	enrollment of the
GRADE E - <10	school (Not %)

Note: The Values given in the brackets denote the difference between the Pre and Post Test Scores.
(For Example: If the Pre-Test Grade is 'C' and the Post-Test Grade is 'A', then the progress is +2)

SCHOOL GRADE - AA

Status Gr. A (0)	Performance Gr. A(+1)
------------------	-----------------------

OVERALL PERFORMANCE GRADES

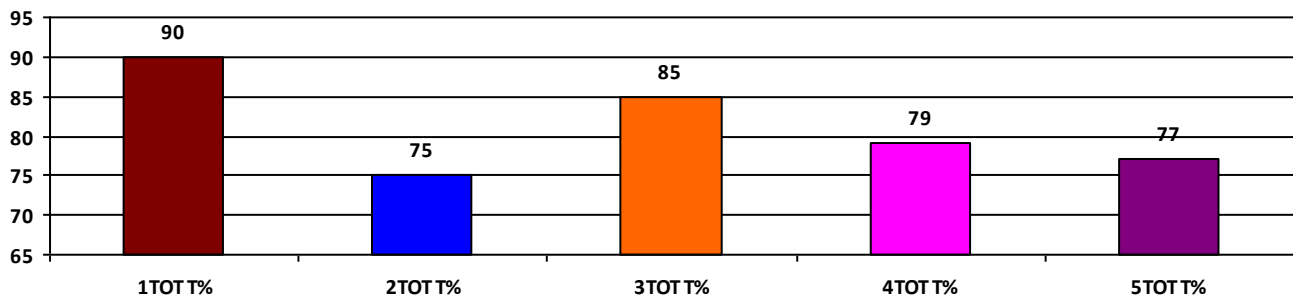
	Boys	Girls	Total
SCHOOL GR.	A	A	A
Diff. to Pre-Test	(+1)	(+1)	(+1)
DIST. GR.	A	A	A
STATE GR.	B	B	B

CLASSWISE APPEARED

DETAILS	I STD	II STD	III STD	IV STD	V STD
BOYS	10	5	19	11	23
GIRLS	15	11	18	18	20
TOTAL	25	16	37	29	43
Diff. to Pre-Test	(-2)	(-1)	(+3)	(+2)	(-2)

CLASSWISE PERFORMANCE GRADES (% of marks)

DETAILS	I STD	II STD	III STD	IV STD	V STD
%	90	75	85	79	77
SCHOOL GR.	A	B	A	A	A
Diff. to Pre-Test	(0)	(-1)	(+1)	(+1)	(+1)
DIST. GR.	A	A	A	A	A
STATE GR.	A	B	B	B	B



GRADEWISE PERFORMANCE (NO. OF STUDENTS)

ENGLISH	1 Std	2 Std	3 Std	4 Std	5 Std	TAMIL	1 Std	2 Std	3 Std	4 Std	5 Std
GR. A	25	10	32	24	31	GR. A	21	10	29	18	17
GR. B	0	3	3	5	12	GR. B	4	2	6	8	23
GR. C	0	2	1	0	0	GR. C	0	3	1	3	3
GR. D	0	0	0	0	0	GR. D	0	0	0	0	0
GR. E	0	1	1	0	0	GR. E	0	1	1	0	0

DEAL POST TEST 2019-20 - SCHOOL REPORT CARD

MAHE
CEO

34030100414 GOVT. LP SCHOOL-PALLOOR WEST

All Grades represent the following scorings in % *

GRADE A - >75	* School Status Grade represents the total enrollment of the school (Not %)
GRADE B - 51 TO 75	
GRADE C - 26 TO 50	
GRADE D - 10 TO 25	
GRADE E - <10	

Note: The Values given in the brackets denote the difference between the Pre and Post Test Scores.
(For Example: If the Pre-Test Grade is 'C' and the Post-Test Grade is 'A', then the progress is +2)

SCHOOL GRADE - AA

Status Gr. A (0)	Performance Gr. A(+1)
------------------	-----------------------

OVERALL PERFORMANCE GRADES

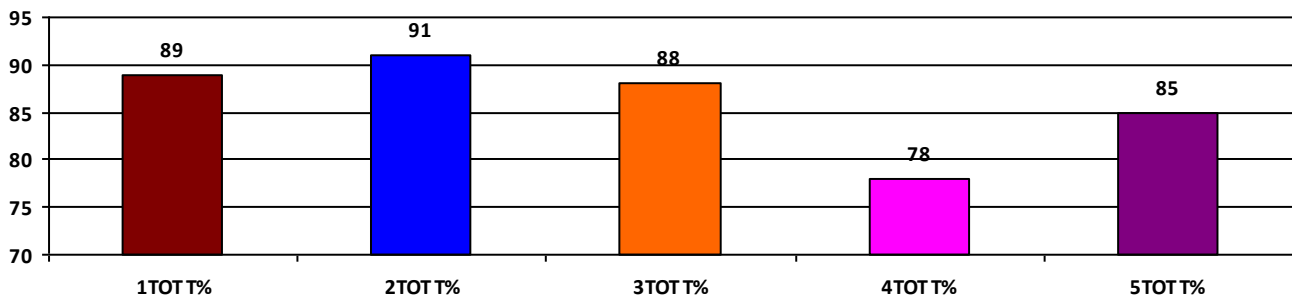
	Boys	Girls	Total
SCHOOL GR.	A	A	A
Diff. to Pre-Test	(+1)	(+1)	(+1)
DIST. GR.	A	A	A
STATE GR.	B	B	B

CLASSWISE APPEARED

DETAILS	I STD	II STD	III STD	IV STD	V STD
BOYS	6	15	7	13	11
GIRLS	9	9	11	16	12
TOTAL	15	24	18	29	23
Diff. to Pre-Test	(-1)	(+1)	(-3)	(+2)	(0)

CLASSWISE PERFORMANCE GRADES (% of marks)

DETAILS	I STD	II STD	III STD	IV STD	V STD
%	89	91	88	78	85
SCHOOL GR.	A	A	A	A	A
Diff. to Pre-Test	(0)	(+1)	(+1)	(+1)	(+1)
DIST. GR.	A	A	A	A	A
STATE GR.	A	B	B	B	B



GRADEWISE PERFORMANCE (NO. OF STUDENTS)

ENGLISH	1 Std	2 Std	3 Std	4 Std	5 Std	TAMIL	1 Std	2 Std	3 Std	4 Std	5 Std
GR. A	13	24	15	24	23	GR. A	13	20	15	20	20
GR. B	2	0	3	4	0	GR. B	2	3	3	8	3
GR. C	0	0	0	0	0	GR. C	0	1	0	0	0
GR. D	0	0	0	0	0	GR. D	0	0	0	1	0
GR. E	0	0	0	1	0	GR. E	0	0	0	0	0

DEAL POST TEST 2019-20 - SCHOOL REPORT CARD

MAHE
CEO

34030101202 **GLPS SCHOOL - PANDAKKAL**

All Grades represent the following scorings in % *

GRADE A - >75	* School Status Grade represents the total enrollment of the school (Not %)
GRADE B - 51 TO 75	
GRADE C - 26 TO 50	
GRADE D - 10 TO 25	
GRADE E - <10	

Note: The Values given in the brackets denote the difference between the Pre and Post Test Scores.
(For Example: If the Pre-Test Grade is 'C' and the Post-Test Grade is 'A', then the progress is +2)

SCHOOL GRADE - AA

Status Gr. A (0)	Performance Gr. A (0)
------------------	-----------------------

OVERALL PERFORMANCE GRADES

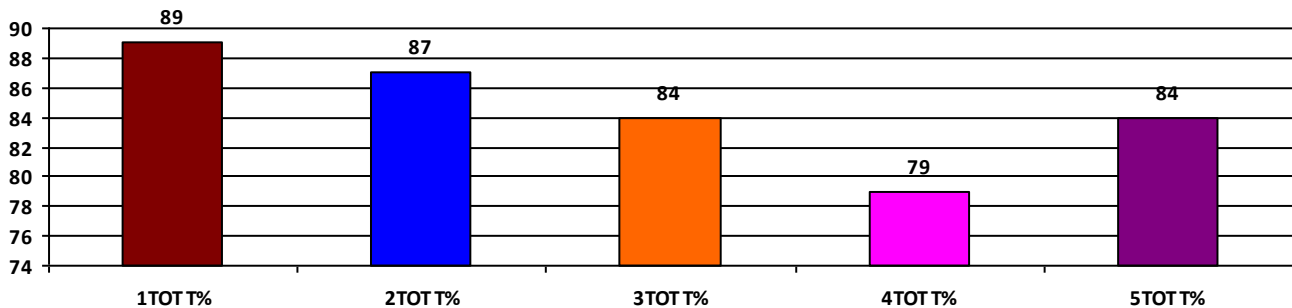
	Boys	Girls	Total
SCHOOL GR.	A	A	A
Diff. to Pre-Test	(+1)	(0)	(0)
DIST. GR.	A	A	A
STATE GR.	B	B	B

CLASSWISE APPEARED

DETAILS	I STD	II STD	III STD	IV STD	V STD
BOYS	18	11	15	20	12
GIRLS	14	20	16	21	19
TOTAL	32	31	31	41	31
Diff. to Pre-Test	(0)	(+1)	(-1)	(-1)	(0)

CLASSWISE PERFORMANCE GRADES (% of marks)

DETAILS	I STD	II STD	III STD	IV STD	V STD
%	89	87	84	79	84
SCHOOL GR.	A	A	A	A	A
Diff. to Pre-Test	(0)	(0)	(+1)	(+1)	(+1)
DIST. GR.	A	A	A	A	A
STATE GR.	A	B	B	B	B



GRADEWISE PERFORMANCE (NO. OF STUDENTS)

ENGLISH	1 Std	2 Std	3 Std	4 Std	5 Std	TAMIL	1 Std	2 Std	3 Std	4 Std	5 Std
GR. A	28	26	26	37	28	GR. A	31	24	19	21	21
GR. B	4	4	5	3	3	GR. B	1	7	12	16	5
GR. C	0	0	0	1	0	GR. C	0	0	0	4	4
GR. D	0	0	0	0	0	GR. D	0	0	0	0	1
GR. E	0	1	0	0	0	GR. E	0	0	0	0	0

DEAL POST TEST 2019-20 - SCHOOL REPORT CARD

MAHE
CEO

34030101502 USMAN GHS-CHALAKKARA

All Grades represent the following scorings in % *

GRADE A - >75	
GRADE B - 51 TO 75	* School Status Grade
GRADE C - 26 TO 50	represents the total
GRADE D - 10 TO 25	enrollment of the
GRADE E - <10	school (Not %)

Note: The Values given in the brackets denote the difference between the Pre and Post Test Scores.
(For Example: If the Pre-Test Grade is 'C' and the Post-Test Grade is 'A', then the progress is +2)

SCHOOL GRADE - AA

Status Gr. A (0) Performance Gr. A(+1)

OVERALL PERFORMANCE GRADES

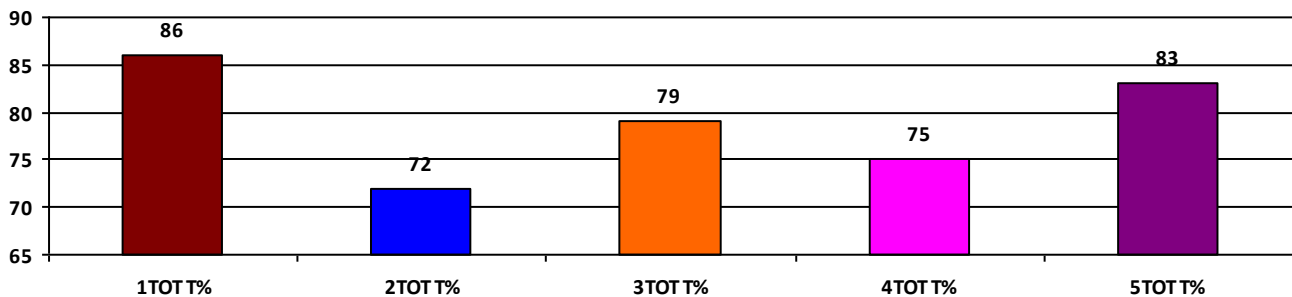
	Boys	Girls	Total
SCHOOL GR.	A	A	A
Diff. to Pre-Test	(+1)	(+1)	(+1)
DIST. GR.	A	A	A
STATE GR.	B	B	B

CLASSWISE APPEARED

DETAILS	I STD	II STD	III STD	IV STD	V STD
BOYS	21	7	15	15	18
GIRLS	15	19	20	18	12
TOTAL	36	26	35	33	30
Diff. to Pre-Test	(+1)	(+3)	(0)	(+3)	(+2)

CLASSWISE PERFORMANCE GRADES (% of marks)

DETAILS	I STD	II STD	III STD	IV STD	V STD
%	86	72	79	75	83
SCHOOL GR.	A	B	A	B	A
Diff. to Pre-Test	(0)	(-1)	(+1)	(0)	(+1)
DIST. GR.	A	A	A	A	A
STATE GR.	A	B	B	B	B



GRADEWISE PERFORMANCE (NO. OF STUDENTS)

ENGLISH	1 Std	2 Std	3 Std	4 Std	5 Std	TAMIL	1 Std	2 Std	3 Std	4 Std	5 Std
GR. A	33	13	25	23	28	GR. A	27	10	19	15	19
GR. B	3	11	10	6	2	GR. B	8	9	13	15	11
GR. C	0	2	0	3	0	GR. C	1	7	3	2	0
GR. D	0	0	0	1	0	GR. D	0	0	0	1	0
GR. E	0	0	0	0	0	GR. E	0	0	0	0	0

DEAL POST TEST 2019-20 - SCHOOL REPORT CARD

MAHE
CEO

34030101508 GMS-AVAROTH

All Grades represent the following scorings in % *

GRADE A - >75	
GRADE B - 51 TO 75	* School Status Grade
GRADE C - 26 TO 50	represents the total
GRADE D - 10 TO 25	enrollment of the
GRADE E - <10	school (Not %)

Note: The Values given in the brackets denote the difference between the Pre and Post Test Scores.
(For Example: If the Pre-Test Grade is 'C' and the Post-Test Grade is 'A', then the progress is +2)

SCHOOL GRADE - AB

Status Gr. A (0) Performance Gr. B (0)

OVERALL PERFORMANCE GRADES

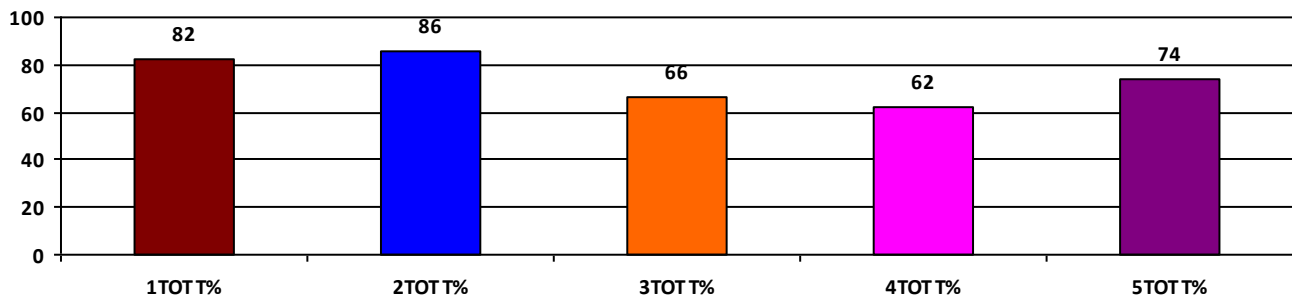
	Boys	Girls	Total
SCHOOL GR.	B	B	B
Diff. to Pre-Test	(0)	(0)	(0)
DIST. GR.	A	A	A
STATE GR.	B	B	B

CLASSWISE APPEARED

DETAILS	I STD	II STD	III STD	IV STD	V STD
BOYS	8	6	8	13	17
GIRLS	10	9	12	9	11
TOTAL	18	15	20	22	28
Diff. to Pre-Test	(-1)	(+1)	(-1)	(0)	(+1)

CLASSWISE PERFORMANCE GRADES (% of marks)

DETAILS	I STD	II STD	III STD	IV STD	V STD
%	82	86	66	62	74
SCHOOL GR.	A	A	B	B	B
Diff. to Pre-Test	(0)	(0)	(+1)	(0)	(0)
DIST. GR.	A	A	A	A	A
STATE GR.	A	B	B	B	B



GRADEWISE PERFORMANCE (NO. OF STUDENTS)

ENGLISH	1 Std	2 Std	3 Std	4 Std	5 Std	TAMIL	1 Std	2 Std	3 Std	4 Std	5 Std
GR. A	16	13	10	8	20	GR. A	10	13	6	7	11
GR. B	2	2	5	10	5	GR. B	6	0	9	9	14
GR. C	0	0	4	1	2	GR. C	2	2	3	3	0
GR. D	0	0	1	2	0	GR. D	0	0	2	1	3
GR. E	0	0	0	1	1	GR. E	0	0	0	2	0

DEAL POST TEST 2019-20 - SCHOOL REPORT CARD

MAHE
CEO

34030101509 GOVT LP SCHOOL-CHEMBRA

All Grades represent the following scorings in % *

GRADE A - >75	* School Status Grade represents the total enrollment of the school (Not %)
GRADE B - 51 TO 75	
GRADE C - 26 TO 50	
GRADE D - 10 TO 25	
GRADE E - <10	

Note: The Values given in the brackets denote the difference between the Pre and Post Test Scores.
(For Example: If the Pre-Test Grade is 'C' and the Post-Test Grade is 'A', then the progress is +2)

SCHOOL GRADE - CA

Status Gr. C (0) Performance Gr. A (0)

OVERALL PERFORMANCE GRADES

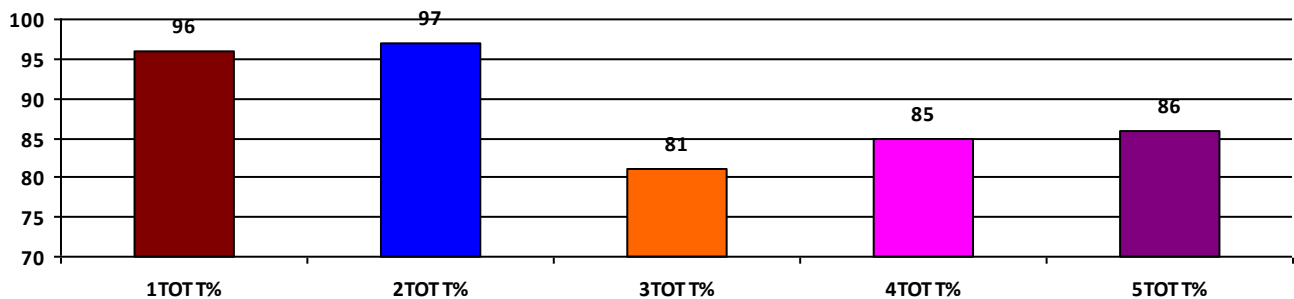
	Boys	Girls	Total
SCHOOL GR.	A	A	A
Diff. to Pre-Test	(0)	(0)	(0)
DIST. GR.	A	A	A
STATE GR.	B	B	B

CLASSWISE APPEARED

DETAILS	I STD	II STD	III STD	IV STD	V STD
BOYS	7	3	3	6	4
GIRLS	3	2	4	6	2
TOTAL	10	5	7	12	6
Diff. to Pre-Test	(-3)	(-1)	(-1)	(0)	(-1)

CLASSWISE PERFORMANCE GRADES (% of marks)

DETAILS	I STD	II STD	III STD	IV STD	V STD
%	96	97	81	85	86
SCHOOL GR.	A	A	A	A	A
Diff. to Pre-Test	(0)	(0)	(+1)	(0)	(+1)
DIST. GR.	A	A	A	A	A
STATE GR.	A	B	B	B	B



GRADEWISE PERFORMANCE (NO. OF STUDENTS)

ENGLISH	1 Std	2 Std	3 Std	4 Std	5 Std	TAMIL	1 Std	2 Std	3 Std	4 Std	5 Std
GR. A	10	5	5	12	6	GR. A	10	5	5	10	3
GR. B	0	0	1	0	0	GR. B	0	0	1	2	3
GR. C	0	0	1	0	0	GR. C	0	0	1	0	0
GR. D	0	0	0	0	0	GR. D	0	0	0	0	0
GR. E	0	0	0	0	0	GR. E	0	0	0	0	0

DEAL POST TEST 2019-20 - SCHOOL REPORT CARD

MAHE
CEO

34030114601 GOVT. LP SCHOOL-CHERUKALLAY

All Grades represent the following scorings in % *

GRADE A - >75	* School Status Grade represents the total enrollment of the school (Not %)
GRADE B - 51 TO 75	
GRADE C - 26 TO 50	
GRADE D - 10 TO 25	
GRADE E - <10	

Note: The Values given in the brackets denote the difference between the Pre and Post Test Scores.
(For Example: If the Pre-Test Grade is 'C' and the Post-Test Grade is 'A', then the progress is +2)

SCHOOL GRADE - AA

Status Gr. A(+1)	Performance Gr. A(+1)
------------------	-----------------------

OVERALL PERFORMANCE GRADES

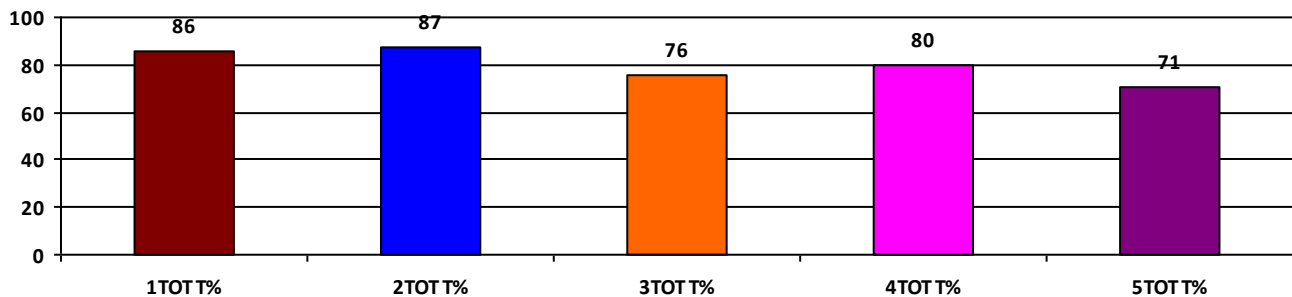
	Boys	Girls	Total
SCHOOL GR.	A	A	A
Diff. to Pre-Test	(+1)	(+1)	(+1)
DIST. GR.	A	A	A
STATE GR.	B	B	B

CLASSWISE APPEARED

DETAILS	I STD	II STD	III STD	IV STD	V STD
BOYS	11	9	5	5	5
GIRLS	6	11	8	10	5
TOTAL	17	20	13	15	10
Diff. to Pre-Test	(+3)	(+1)	(-2)	(0)	(0)

CLASSWISE PERFORMANCE GRADES (% of marks)

DETAILS	I STD	II STD	III STD	IV STD	V STD
%	86	87	76	80	71
SCHOOL GR.	A	A	A	A	B
Diff. to Pre-Test	(0)	(0)	(+1)	(+1)	(0)
DIST. GR.	A	A	A	A	A
STATE GR.	A	B	B	B	B



GRADEWISE PERFORMANCE (NO. OF STUDENTS)

ENGLISH	1 Std	2 Std	3 Std	4 Std	5 Std	TAMIL	1 Std	2 Std	3 Std	4 Std	5 Std
GR. A	16	18	9	13	8	GR. A	14	15	7	11	4
GR. B	0	2	4	1	0	GR. B	2	3	4	3	3
GR. C	1	0	0	1	2	GR. C	1	2	1	1	1
GR. D	0	0	0	0	0	GR. D	0	0	1	0	2
GR. E	0	0	0	0	0	GR. E	0	0	0	0	0